



AMERICAN INTERNATIONAL GEMOLOGISTS

The AIG Gem & Jewelry Appraisal

2715 Edgeview Ct. • Newbury Park, California 91320
Tel: (805) 499-3012 • Fax (805) 375-6560 • Email: info@aiglabs.com

Appraisal No. 019000000000RTF

Sandra L. Customer
1234 Your Street
Anytown, CA. 90000

Diamond Tennis Bracelet

Purpose of Appraisal **Retail Replacement Value**
Function of Appraisal **Insurance**

One electronically tested 14KT white gold ladies cast & assembled diamond tennis bracelet. A seven inch length bracelet composed of a flexible strap of in-line diamonds terminating in a concealed clasp, with twin safety. Bright polish finish. Identified with markings of "14K". Condition is new, good workmanship.

*Tennis bracelets got their unusual name from an incident involving the U.S. professional tennis player **Chris Evert** during a tennis match in the 1980's. Evert had been wearing an expensive diamond bracelet, an inline string of individually-set diamonds. Previously these bracelets were known as eternity bracelets. When the clasp snapped during play, she asked the officials to stop the tennis match until the bracelet could be found. Since that day, bracelets featuring an inline ribbon of diamonds have been called tennis bracelets.*

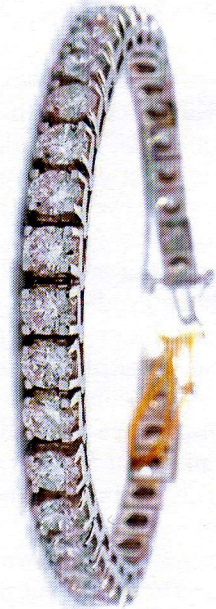
Containing:

Thirty-Six prong set round brilliant cut diamonds, measuring 4.60 - 4.40 x 2.75mm (depth est.) approximate total weight of 36 Stones = 14.00ct. Graded in the setting.

Clarity **SI-2 to I-1**
Color **F - H**

Total Weight of Diamonds **14.00 ct.**
Total Weight of Bracelet **22.40 gm**

Retail Replacement Value **\$ 51,200.00 US**



AIG Staff Appraiser / Graduate Gemologist GG GIA
A.I.G. Labs Jewelry Appraisal Department

Date: July 11, 2011